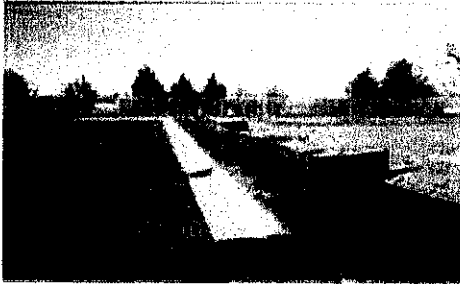


ENGINEERING DEPARTMENT INSPECTIONS

TO REQUEST INSPECTIONS CALL: 770-253-8433 X 241 OR EMAIL
DMCCAULEY@CITYOFNEWNAN.ORG & RHILL@CITYOFNEWNAN.ORG

1. SITE PREP INSPECTION



WHAT CAN I DO BEFORE I HAVE MY BUILDING PERMIT?

- ✓ You are allowed to box out the foundation
- ✓ You are allowed to do minor grading for pad prep
- ✓ You are allowed Tree Protection Fence
- ✓ You are allowed to dig out a basement and stock pile the dirt
- ✓ You are allowed to install Erosion Control Measures

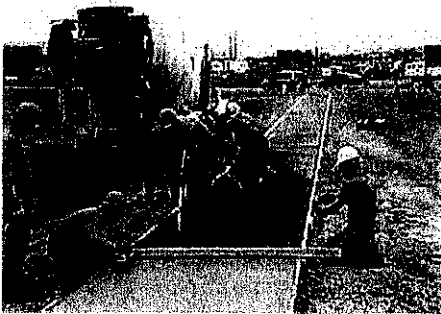
WHEN DO I CALL FOR THE SITE PREP INSEPCITON?

- ✓ After Erosion Control Measures (silt fence Type "C" only, rock entrances, mulch and inlet protection are installed)
- ✓ After you have marked the house corners or boxed out the slab or excavated the basement
**Remember that although you can work on these items before the inspection you are still required to have your bmp's in place to prevent erosion from leaving your site before your disturb the soil.*

WE WILL NOTIFY YOU IF YOUR SITE HAS DEFICIENCIES

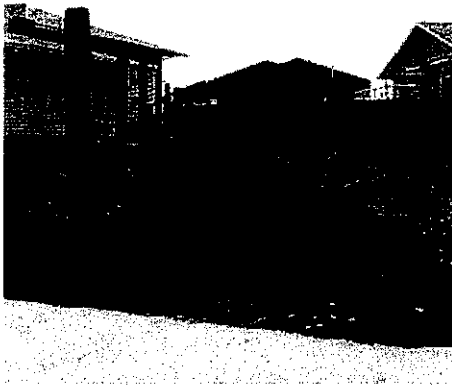
WHEN YOUR PERMIT IS APPROVED THE TECHINICIAN WILL CALL YOU TO PICK UP YOUR PERMIT.

2. DRIVEWAY AND/OR SIDEWALK FORMS INSPECTION



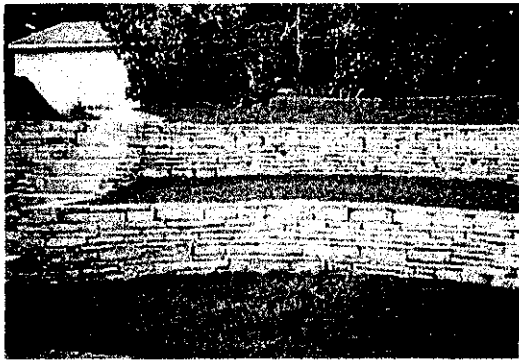
- ❖ CALL AFTER THE FORMS ARE IN PLACE AND SUBGRADE IS COMPACTED AND READY
- ❖ PLACE EXPANSION JOINT MATERIAL AT ALL STRUCTURES, COLD JOINTS, DRIVEWAY APRONS, CURB RAMPS AND AT 60 FOOT INTERVALS (PER GDOT DETAIL A-3)
- ❖ CONTRACTION JOINTS EVERY 20 FEET MAX
- ❖ MAX 2% CROSS SLOPE EVEN WHERE SIDEWALK CROSSES DRIVEWAY APRON

3. FINAL INSEPCION (GENERAL SOIL EROSION)



- ❖ CALL AFTER THE YARD IS SODDED AND ALL TREES AND LANSCAPING IS INSTALLED
- ❖ WE WILL CHECK TO MAKE SURE THAT DRAINAGE SWALES ARE INSTALLED TO CARRY STORMWATER TO A LOGICAL LOCATION
- ❖ WE WILL CHECK TO MAKE SURE THAT NO SIDEWALK OR DRIVEWAY APRONS ARE BROKEN
- ❖ WE EXPECT ALL TEMPORARY SEDIMENT MEASURES NO LONGER NEEDED TO BE REMOVED
- ❖ WE EXPECT ALL CONSTRUCITON DEBRIS TO BE REMOVED AND PROPERLY DISPOSED OF
- ❖ ANY ADJACENT AREAS DISTURBED DURING CONSTRUCTION MUST ALSO BE STABLIZED WITH SEED AND STRAW OR OTHER APPROVED EROSION CONTROL MEASURES

4. RETAINING WALL INSPECTIONS



- ❖ WALLS UNDER 4 FEET IN HEIGHT ARE NOT REQUIRED TO OBTAIN A PERMIT UNLESS THEY ARE ATTACHED TO THE HOUSE OR ARE ON THE RIGHT OF WAY (BACK OF SIDEWALK)
- ❖ WALLS THAT ARE 4 FEET OR TALLER OR THAT ARE ATTACHED TO THE HOUSE OR LOCATED ON THE RIGHT OF WAY MUST HAVE AN ENGINEERED STAMPED PLAN PRIOR TO OBTAINING A PERMIT AND WILL HAVE REQUIRED INSPECTIONS.
- ❖ WE WILL CHECK TO MAKE SURE THAT DRAINAGE SWALES ARE INSTALLED TO CARRY STORMWATER TO A LOGICAL LOCATION AWAY FROM THE TOP OF THE WALL
- ❖ WE WILL INSPECT THE INSTALLATION OF GEO-GRID, REBAR OR DEADMEN, FOOTINGS AND DRAINAGE
- ❖ WE MAY REQUIRE THE ENGINEER OF RECORD TO ALSO CONDUCT INSPECTIONS AND PROVIDE A LETTER FOR OUR FILES.